

---

**Note!**

*Please note that there can be small differences between your product and the images in these instructions.*

---

**Note!**

*Please note that during storage and transport, especially at high ambient temperature, some of the oil and grease used for assembly may leak and stain the packaging. This will not cause damage to the product, wipe off the excessive oil or grease with a cloth.*

---

---

**Note!**

*Before you install this product, check the kit contents. If anything is missing, please contact an Öhlins dealer.*

---

**Warning!**

*Before you install this product, read the Öhlins Owner's manual. This product is an important part of the vehicle and the vehicle stability.*

---

---

**Cancellation kit, Audi S3 8P**

**35020-27**

**Mounting Instructions**

# MOUNTING INSTRUCTIONS

## **⚠ Warning!**

*We strongly recommend to let an Öhlins dealer install this product.*

## **⚠ Warning!**

*If you work with a lifted vehicle, make sure that it is safely supported to prevent it from tipping over.*

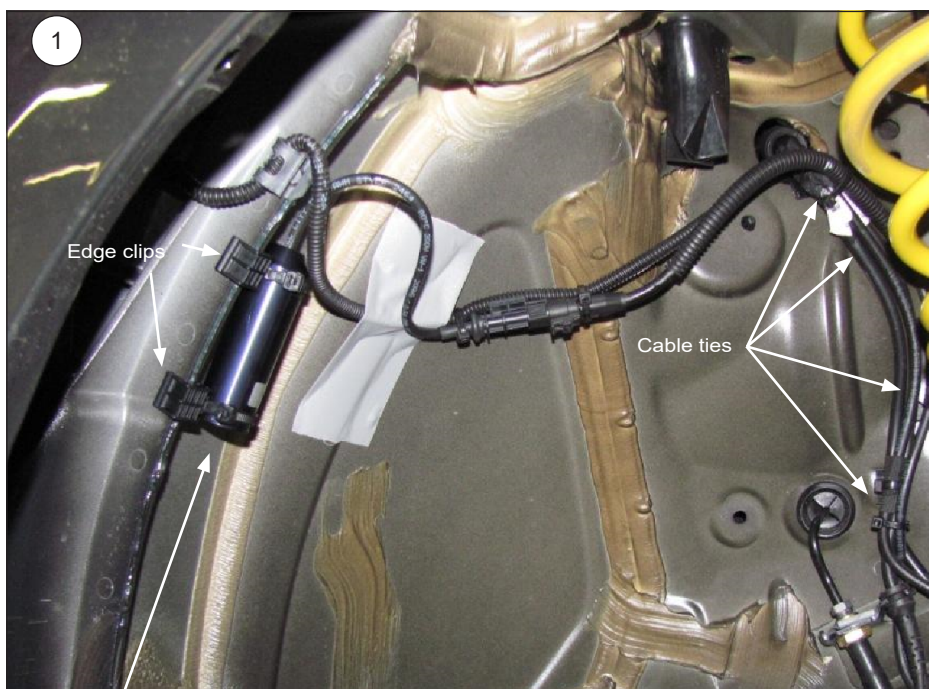
## **Right vehicle side**

**1**

Run the original shock absorber cable along the marked point and fix it on the original wire harness with the supplied cable ties.

**2**

Mount the front axle electronic kit with the supplied edge clips and cable ties on the chassis edge.



**2**

Assembly area  
front axle electronic kit

3 x



1 x



4 x



# MOUNTING INSTRUCTIONS

## **⚠ Warning!**

*We strongly recommend to let an Öhlins dealer install this product.*

## **⚠ Warning!**

*If you work with a lifted vehicle, make sure that it is safely supported to prevent it from tipping over.*

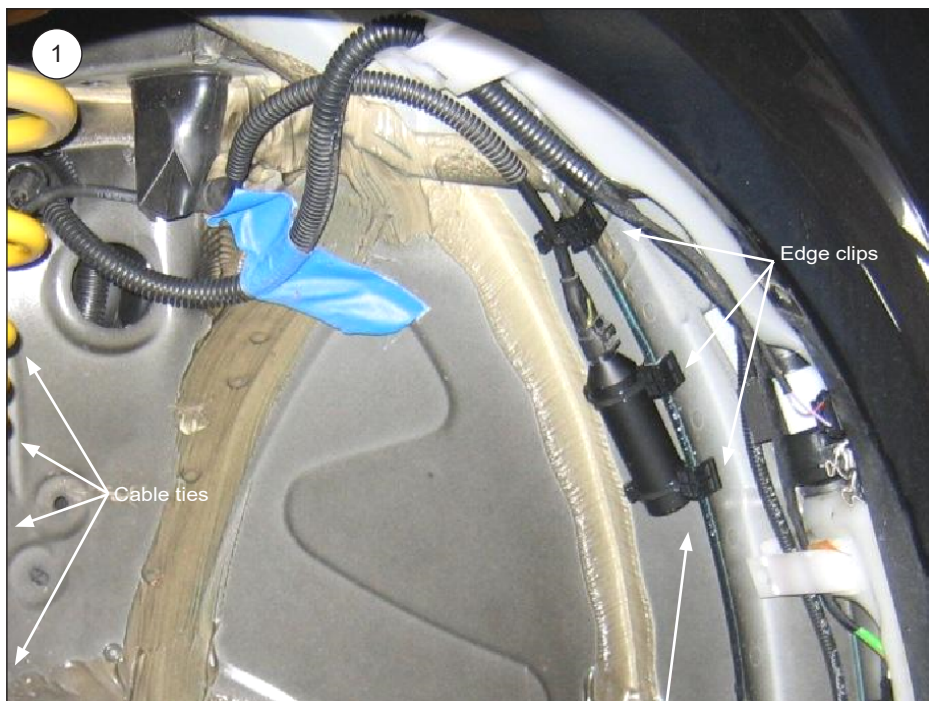
## **Left vehicle side**

**1**

Run the original shock absorber cable along the marked point and fix it on the original wire harness with the supplied cable ties.

**2**

Mount the front axle electronic kit with the supplied edge clips and cable ties on the chassis edge.



**2**

Assembly area  
front axle electronic kit

3 x



1 x



4 x



# MOUNTING INSTRUCTIONS

Rear axle

Left vehicle side



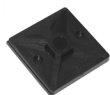
2

Assembly area  
rear axle electronic kit

1 x



1 x



2 x





# MOUNTING INSTRUCTIONS

## Rear axle

### Left vehicle side

1

Run the original shock absorber cable along the marked point and fix it on the original wire harness with the supplied cable ties.

2

Mount the rear axle electronic kit with the supplied adhesive mount and cable ties on the chassis.

#### **Note!**

*Surface must be cleaned degreased.*



# MOUNTING INSTRUCTIONS

## Rear axle

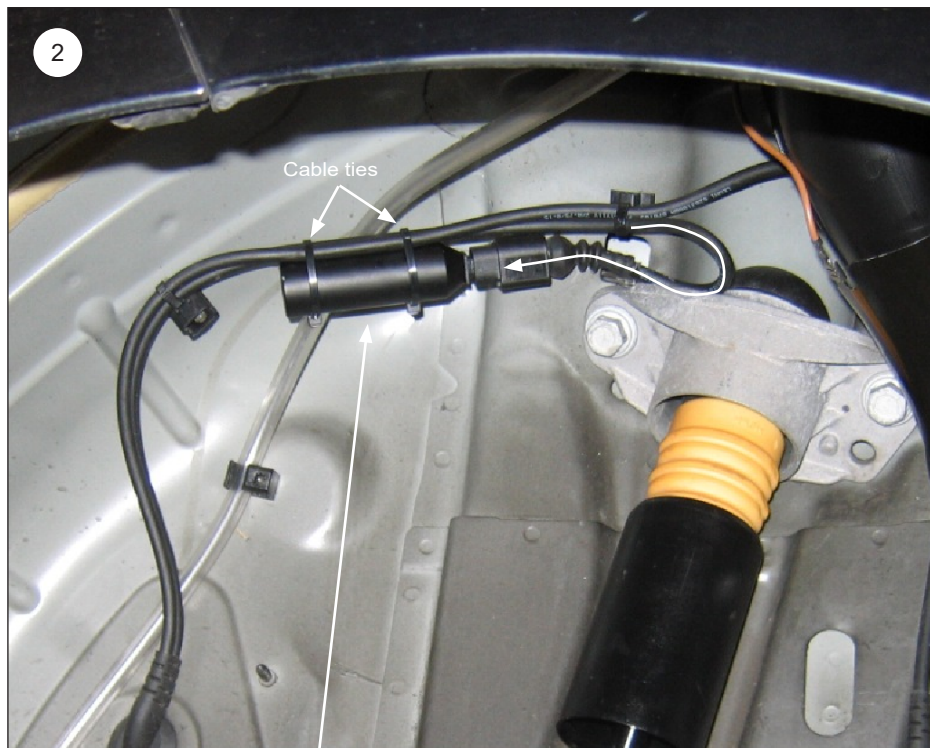
### Right vehicle side

1

Run the original shock absorber cable along the marked point and fix it on the original wire harness with the supplied cable ties.

2

Mount the rear axle electronic kit with the supplied adhesive mount and cable ties on the chassis.



2

Assembly area  
rear axle electronic kit

1 x



2 x



This page intentionally left blank

Öhlins products are subject to continuous improvement and development, therefore, although these instructions include the most up-to-date information available at the time of printing, minor updates may occur.

To find the latest information contact an Öhlins distributor. Please contact Öhlins if you have any questions regarding the contents in this document.

Part no. MI\_35020-27\_1  
Issued 2021-03-11

© Öhlins Racing AB. All rights reserved. Any reprinting or unauthorized use without the written permission of Öhlins Racing AB is prohibited.

Öhlins Racing AB  
Box 722  
S-194 27 Upplands Väsby, Sweden  
Phone +46 8 590 025 00  
fax +46 8 590 025 80



[www.ohlins.com](http://www.ohlins.com)