

**Note!**

*Please note that there can be small differences between your product and the images in these instructions.*

**Note!**

*Before you install this product, check the kit contents. If anything is missing, please contact an Öhlins dealer.*

**Cancellation kit, Mercedes A45 AMG W177**

***35020-35***

**Mounting Instructions**

# MOUNTING INSTRUCTIONS

## Front axle:

1

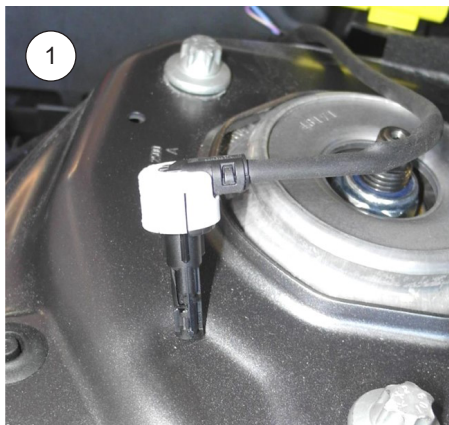
Dismantle the standard connector.

2

Remove the standard wires out of the connector. Use a correct tool.

3

Insert the wires into the supplied connector until they lock in place. The pin position / cable color is not relevant. Subsequently lock the connector.



# MOUNTING INSTRUCTIONS

## Front axle left:

1

Run the standard damper control wire to the supplied electronic component connector. Insert the standard connector into the electronic component connector until it locks. Fix the canceller with edge clips on the vehicle chassis.

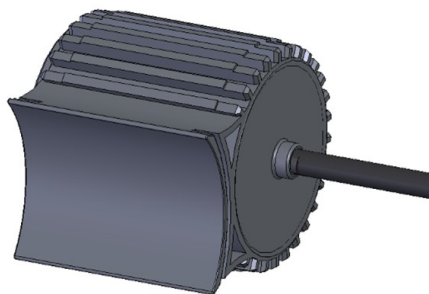
2

In addition, secure the cable with the included cable ties.



### **Caution!**

*Fix the tape on the electronic component.  
Adherend must be cleaned and degreased*



# MOUNTING INSTRUCTIONS

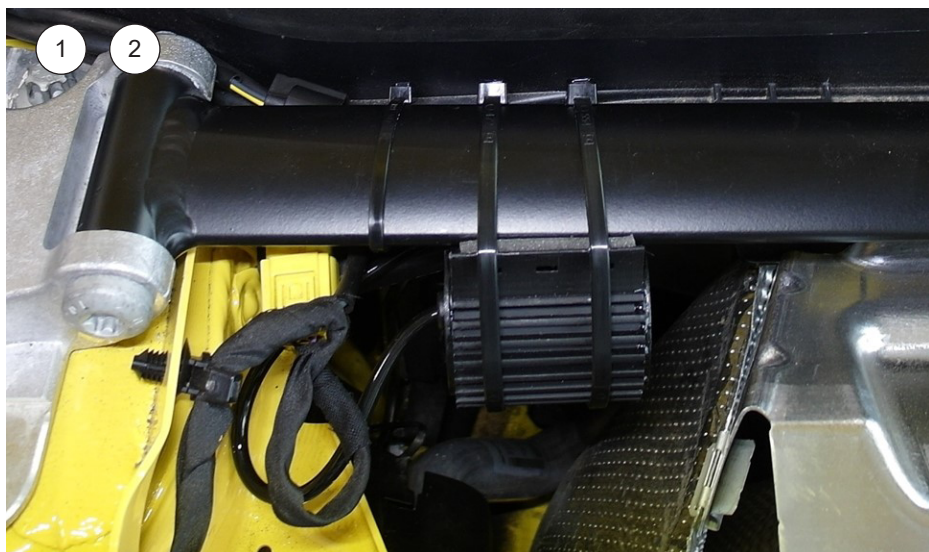
## Front axle right:

1

Run the standard damper control wire to the supplied electronic component connector. Insert the standard connector into the electronic component connector until it locks. Fix the canceller with edge clips on the vehicle chassis.

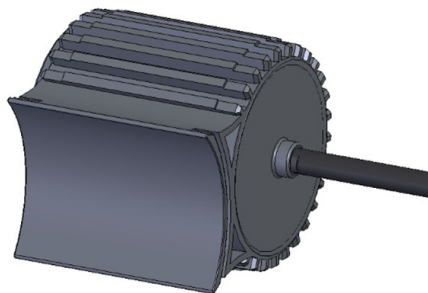
2

In addition, secure the cable with the included cable ties.



### **Caution!**

*Fix the tape on the electronic component.  
Adherend must be cleaned and degreased*





# MOUNTING INSTRUCTIONS

## Rear axle A-class:

**1**

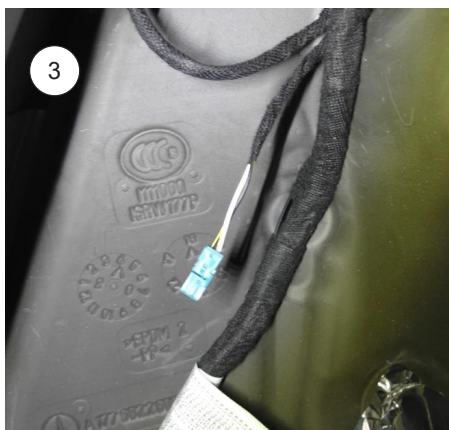
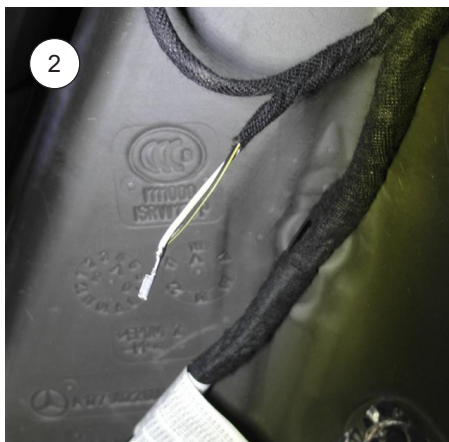
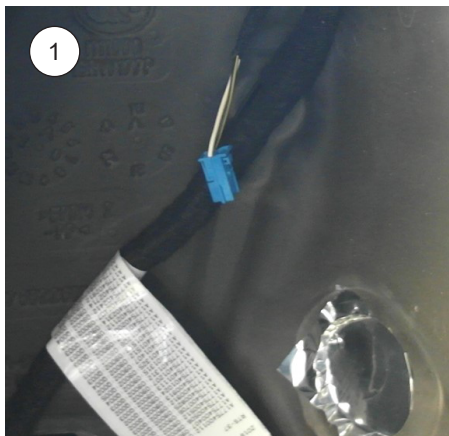
Dismantle the standard connector.

**2**

Remove the standard wires out of the connector. Use a correct tool.

**3**

Insert the wires into the supplied connector until they lock in place. The pin position / cable color is not relevant. Subsequently lock the connector.



# MOUNTING INSTRUCTIONS

## Rear axle left:

1

Run the standard damper control wire to the supplied electronic component connector. Insert the standard connector into the electronic component connector until it locks. Fix the canceller with cable ties on the vehicle chassis.

2

In addition, secure the cable with the included cable ties. Close the hole with the supplied sealing plug.



# MOUNTING INSTRUCTIONS

## Rear axle right:

1

Run the standard damper control wire to the supplied electronic component connector. Insert the standard connector into the electronic component connector until it locks. Fix the canceller with cable ties on the vehicle chassis.

2

In addition, secure the cable with the included cable ties. Close the hole with the supplied sealing plug.



# MOUNTING INSTRUCTIONS

## Rear axle CLA:

1

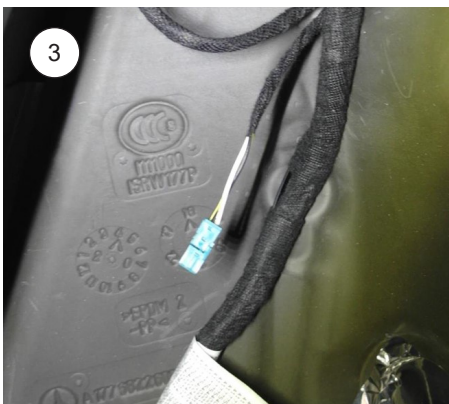
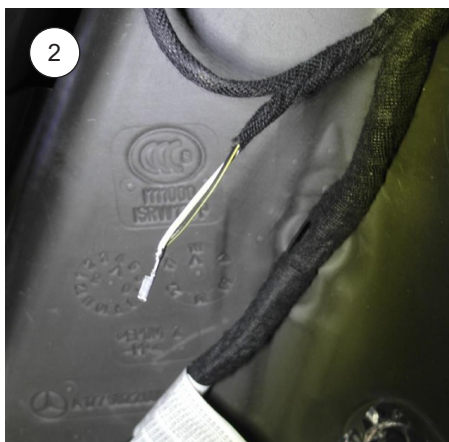
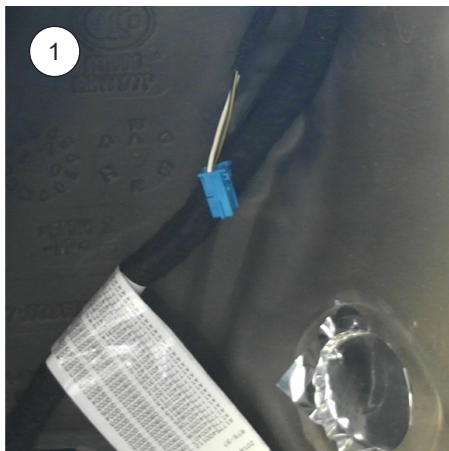
Dismantle the standard connector.

2

Remove the standard wires out of the connector. Use a correct tool.

3

Insert the wires into the supplied connector until they lock in place. The pin position / cable color is not relevant. Subsequently lock the connector.





# MOUNTING INSTRUCTIONS

## Rear axle left CLA:

1

Run the standard damper control wire to the supplied electronic component connector. Insert the standard connector into the electronic component connector until it locks. Fix the canceller with cable ties on the vehicle chassis.

2

Close the hole with the supplied sealing plug.

3

In addition, secure the cable with the included cable ties.



## Rear axle right CLA:

1

Run the standard damper control wire to the supplied electronic component connector. Insert the standard connector into the electronic component connector until it locks. Fix the canceller with cable ties on the vehicle chassis.

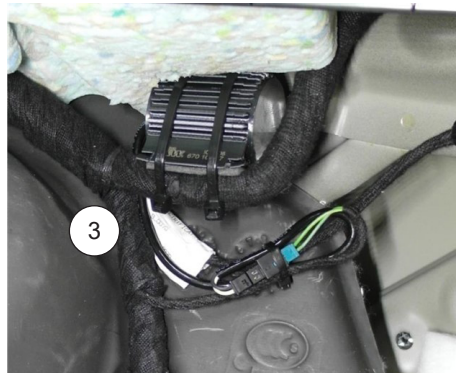


2

Close the hole with the supplied sealing plug.

3

In addition, secure the cable with the included cable ties.



Öhlins products are subject to continuous improvement and development, therefore, although these instructions include the most up-to-date information available at the time of printing, minor updates may occur.

To find the latest information contact an Öhlins distributor. Please contact Öhlins if you have any questions regarding the contents in this document.

Part no. MI\_35020-35\_0  
Issued 2022-09-09

© Öhlins Racing AB. All rights reserved. Any reprinting or unauthorized use without the written permission of Öhlins Racing AB is prohibited.

Öhlins Racing AB  
Box 722  
S-194 27 Upplands Väsby, Sweden  
Phone +46 8 590 025 00  
fax +46 8 590 025 80



[www.ohlins.com](http://www.ohlins.com)